

# Protection for Quick Connectors

We offer 3 standard ranges:

- **DR** - without a pull tab
- **DS** - with a side pull tab
- **DT** - with a center pull tab



DR range



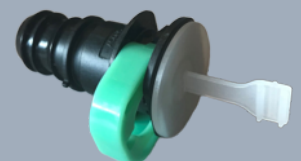
DS range



DT range

## Applications

- **Quick connectors:**
  - Fluid transfer systems
  - Fuel systems
  - Engine cooling
  - Thermal management
- **Standard range:** 6,35 up to 33,4 mm
- **Materials:** LDPE & Bioplastics
- **New DT range:**
  - Center pull tab with ribs for improved ergonomics
  - Protects applications with O-rings
  - Ensures tight internal closure and protection during transportation
  - Customized solutions available
- **DR/DS range:**
  - Wide flange to protect external surface
  - Side pull tab on DS for ease of removal



## Standard Range

Range	Part number	Size (mm)	Size (in)
DR	DR0080A	8	5/16"
	DR0095A	9,5	3/8"
	DR0100A	10	7/16"
	DR0160A	16,1	5/8"
DS	DS0064A	6,3	1/4"
	DS0078A	7,8	5/16"
	DS0080A	8	5/16"
	DS0095A	9,5	3/8"
	DS0100A	10	7/16"
	DS0118A	11,8	
	DS0126A	12,6	1/2"
	DS0150A	15	
	DS0159A	15,6	5/8"
	DS0160A	16	5/8"
DT	DT0064A	6,3	1/4"
	DT0080A	8,1	5/16"
	DT0095A	9,7	3/8"
	DT0100A	10,1	7/16"
	DT0118A	12	1/2"
	DT0150A	15,2	
	DT0159A	15,8	5/8"